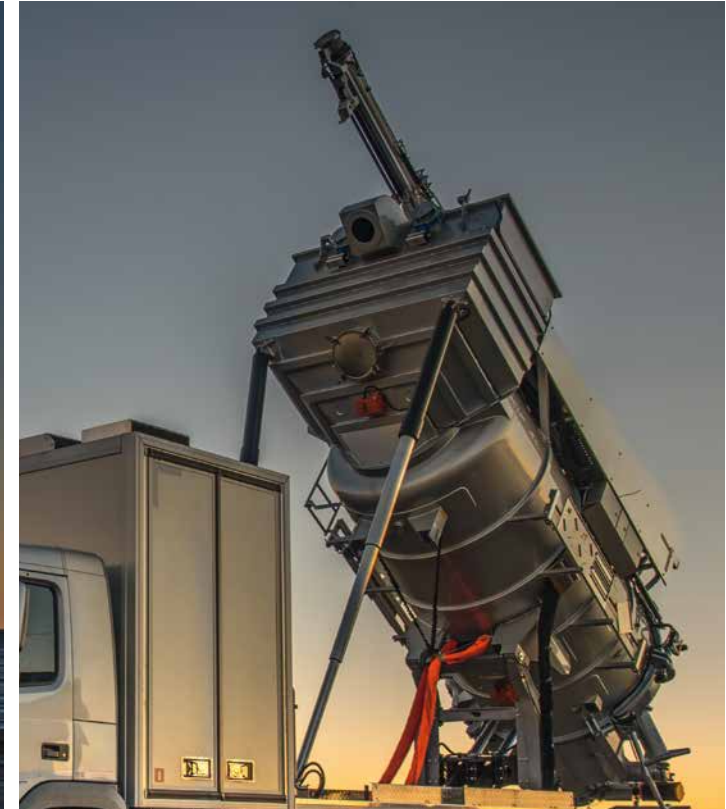


Kaiser. Performance counts.



Hercules

Premium range dry vacuum vehicle



DRY SUCTION

Hercules

Powerful and reliable

The highly efficient dry vacuum vehicle is available as standard with a powerful SIAV-8702 Roots compressor with a suction power of up to 9000 m³/h. With a vacuum capacity of 90% and a pressure of up to 1 bar, the vehicle is equipped for all dry vacuuming and blowing operations. Exhaust filtration is effected through 72 filter bags with fully automatic cleaning of the filter elements.

Power is transferred directly without the use of any belt drives, which means that the system is very reliable and requires minimum maintenance.

Versatile and efficient

The Hercules dry vacuum vehicle is designed for the heaviest and most demanding dry suction jobs, but it may also be effectively used for wet suction work. The flexible suction unit can be optimally adapted for each application, irrespective of whether suction works are conducted from below or a work-space higher up. The filter chamber is optimally designed and has a large hydraulic discharge door to make emptying easy and efficient. With the help of a specially designed blowing ejector, dry materials can be transferred very efficiently, also upwards. All work functions can be performed by radio remote control.

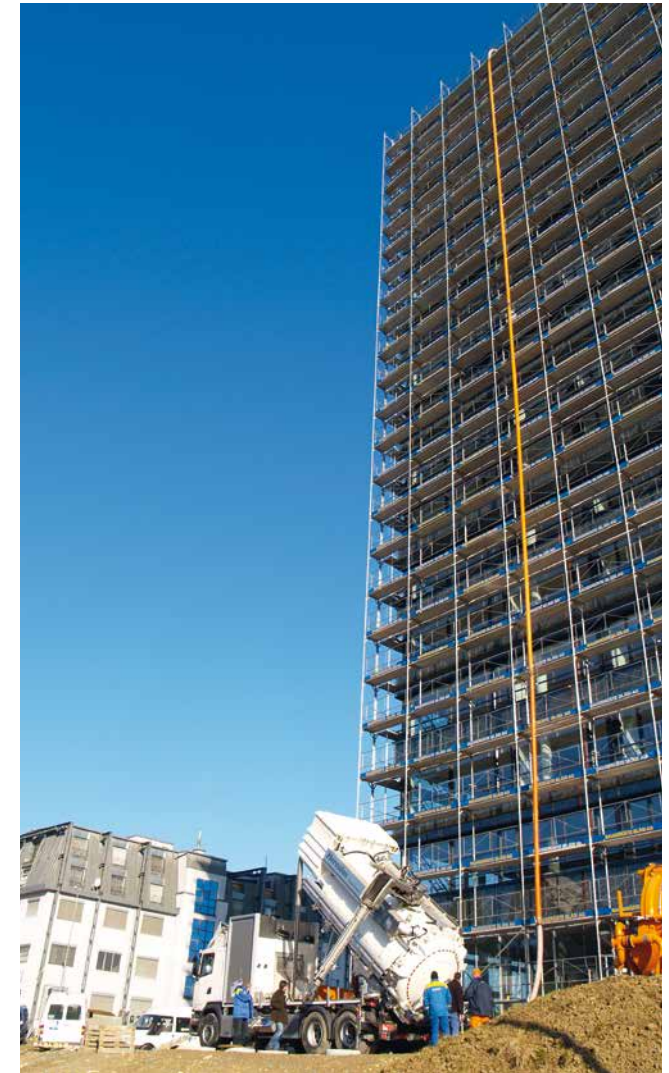
For maximum blowing performance an optional screw compressor with an air flow rate of almost 7300 m³/h and a constant overpressure of 2 bar (3 bar absolute) is available. In this configuration the Hercules is really a top class performer. As an option the Hercules can also be equipped with a high-pressure water pump for smaller jetting or cleaning jobs.

High-tipping system

The Hercules can be equipped with a high-tipping system of rigid and light-weight design for obtaining optimum payload. As an option, the subframe can also be supplied in aluminium. The unique system with dual front cylinders provides outstanding tipping stability.

User-friendly

The Hercules is equipped with a modern user-interface and a full-function radio remote control. The IQAN touch-display clearly shows the different parameters needed for a smooth and safe operation. The optional G11-Bluetooth adapter for connecting a smartphone to the IQAN is a convenient tool for the operator and the service-staff to optimize efficiency of the vehicle.



DETAILS AT A GLANCE



High-pressure water pump



Pump compartment



Head filters



High-tipping system



Suction boom



Control panel



Radio remote control



Access filter chamber



Filling sensor



Blowing ejector

TECHNICAL SPECIFICATIONS AND EQUIPMENT

	3-Axle Truck	4-Axle Truck
Tank volume (l)	9000 - 12000	12000 - 15000
Payload (kg)	5300 - 7500	9000 - 11000
Dimensions LxBxH (mm)	9000x2500x3960	10200x2500x3960

Noise and freeze protection

- Sound-absorbing compartment for positive displacement lobe pump and high-pressure water pump (option) with 2 inspection doors
- Oversized air intake and exhaust
- For operating down to -30° Celsius
- Short and covered tubes and lines

Options

- Fan radiators
- Diesel heater

Radio remote control

- Suction boom control
- Positive displacement lobe pump on/off
- Speed control of the truck engine
- Filter cleaning
- Suction/pressure mode
- Vibrators on/off
- Option: water pump on/off
- Option: Bluetooth smartphone app for remote connection

Vacuum system

- Positive displacement lobe pump SIAV-8702 with a suction capacity of 9000 m³/h free airflow, a maximum vacuum rate of 90% and 1 bar overpressure or screw compressor Aerzen VML 95 with a suction capacity of 7260 m³/h free airflow, a maximum vacuum rate of 85% and up to 2 bar overpressure
- Filter system with 72 round-shaped head filters, mounted in stainless steel chamber, with hydraulic emptying hatch
- The blower is driven directly by a cardan shaft without any belt drive

Options

- Suction boom with 8" suction hose, 270° hydraulically slewable, radius of operation 6750 mm, 1400 mm hydraulically extendable
- Fully hydraulic four-segment excavation arm with 10" suction hose, 180° hydraulically slewable
- Hydraulic suction hose reel
- High-pressure water pump with a flow rate of 30 to 150 ltrs/min and a pressure of max. 200 bar
- Self-rewinding jetting hose reel with 18 m DN10 hose
- Hydraulic jetting hose reel with 60 m DN13 hose
- Water tank made of aluminium, capacity 300 litres
- Shut-off valves for wet material with quick assembly
- Automatic pressure adjustment valve for blowing

Tank body

- Tank made of stainless steel
- Tilting cylinder for complete emptying of the tank
- Filling sensor for dry and wet material
- Hydraulically operated rear door

Options

- Blowing ejector
- Big Bag device
- 8" gate valve
- Boom valve
- 10" emptying valve
- Flanged suction pipe
- Aluminium subframe
- Double vibrators
- Automatic filter cleaning
- High-tipping system with hydraulic supporting legs
- Tank in ADR execution
- PED approval

COMPONENTS AND TECHNOLOGY

Outstanding blowing performance

In combination with the Aerzen screw compressor, the Hercules becomes a high performance material blower. Especially in the field of graveling, silo-loading or planting high-rise roofs, the Hercules is the most powerful of its kind. With a continuous overpressure of 2 bar and a constantly high air flow rate the Hercules is not only an efficient material blower but also very effective when it comes to suction applications.



Vacuum pumps



HIBON blower



AERZEN compressor

Accessories



Shaker



Pipe and hose holders



Support legs



Suction inlet

Remote access

Remote connection via Bluetooth adapter for fast support and assistance through our KAISER EUR-MARK service team.

Suction booms



Fully hydraulic suction boom



Fully hydraulic excavation arm



HERCULES, THE MOST PERFORMANT MATERIAL BLOWER ON THE MARKET

FOR YOUR APPLICATION THE SUITABLE KAISER PRODUCT

RECYCLING VEHICLES



Top performance and reliability under the most difficult sewer conditions.

AquaStar

Eco 3.0

EcoCycler

CityCycler

EcoCombi

CityCleaner

WATER TREATMENT VEHICLES



Water treatment by means of flocculation.

AquaStar WT

KoIDry

COMBINATION VEHICLES



Flexibility to handle a wide range of applications.

Elegance 2.0

AquaStar

Combi Eur-Mark

Tornado

BasicLine

JETTING AND VACUUM VEHICLES



Designed to meet the highest performance requirements in the respective field.

Tornado

Elegance 2.0

Twister

Special vehicles

DRY VACUUM VEHICLES



High-performance vacuuming of dry and wet materials.

Cerberus

Hercules

HYDROVACS



High productivity with a rugged and reliable technology.

CV-Series

Urban X

MOBILE-WALKING EXCAVATOR



Impressive technology to master tough challenges.

S12 Allroad

S12 4x4

S10

S2

ROAD-RAIL EXCAVATOR



Perfectly matched to the application of the railway environment.

S22RR