

Kaiser. Performance counts.



S24^{RR}

High performance on rail.

ROAD-RAIL EXCAVATOR
WITHIN CLEARANCE GAUGE

THE NEW KAISER S24^{RR}

For demanding applications

✔ MORE PERFORMANCE

Variable hydraulic rail drive,
25% more powerful wheel drive

Walking Booster for easier rerailing

Powerful cooling system for operating
power-demanding attachments

Engine: Perkins with 117 or 140 kW

✔ HIGHER LOAD CAPACITIES

Increased stability and load capacity,
optional two additional counterweights

Even axle load and weight distribution thanks
to new symmetrical undercarriage

Innovative equalisation system

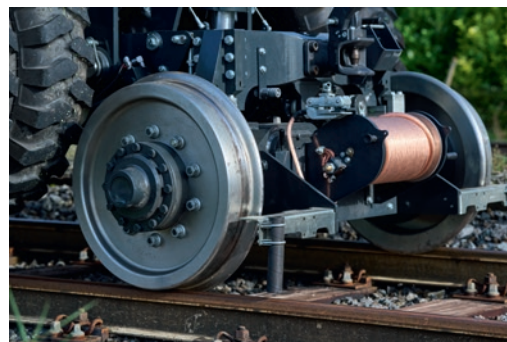
✔ A NEW LEVEL OF OPERATOR COMFORT

Enlarged field of vision thanks to new design

Intuitive operation via central display

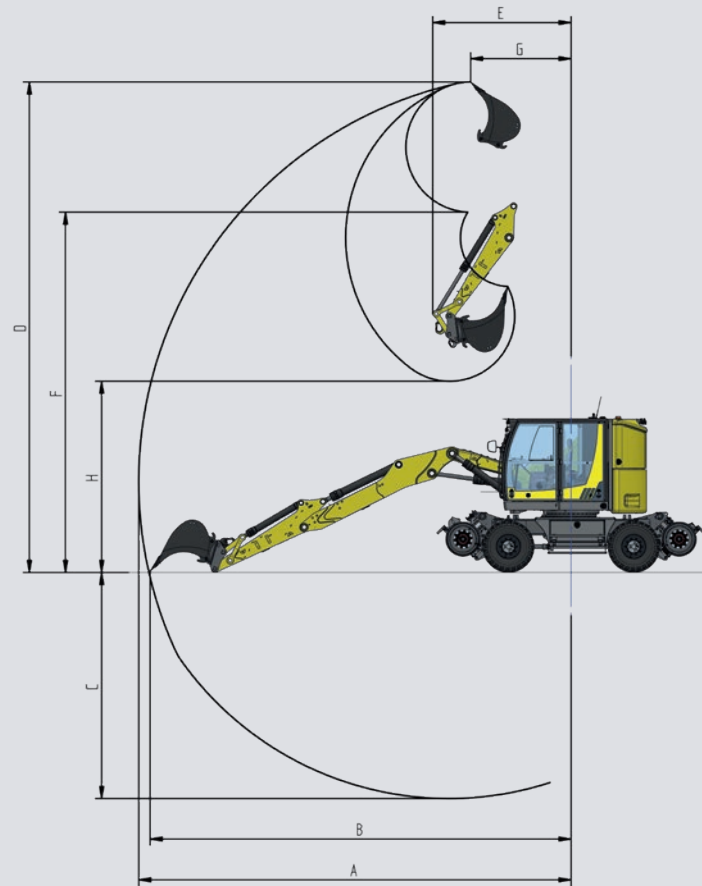
Operating elements moving in line with the seat

Optimised heating and air conditioning thanks
to optimized air flow





DIGGING ENVELOPE



Stick length 2 m

A = Max. reach	8800 mm
B = Max. reach at ground level	8570 mm
C = Max. digging depth	4600 mm
D = Max. digging height	9980 mm
E = Min. swing radius	2820 mm
F = Max. dumping height	7330 mm
G = Swing radius at max. height	2050 mm
H = Max. dumping height close-up area	3890 mm

TECHNICAL SPECIFICATIONS

Engine: Perkins 1204J

Power	117 or 140 kW
Torque	710 or 815 Nm at 1400 rpm
Displacement	4.4 liters
Fuel tank in undercarriage	270 liters
Adaptive, pressing cooling system	

Hydraulic system

Four-circuit load sensing / LUDV hydraulic system with flow sharing and totalizing function

Individually adjustable performance modes for energy-efficient work

Up to four double-acting hydraulic circuits

Variable hydraulic rail drive

Travel speed rail	0-28 km/h
Travel speed road	0-30 km/h

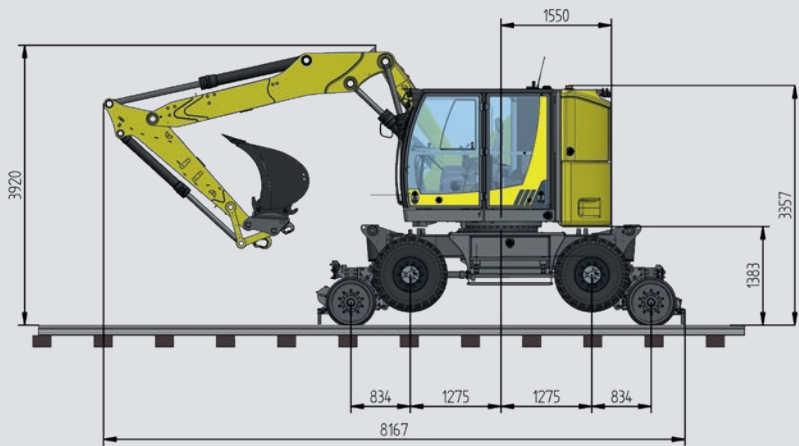
Safety system

Integrated safety system according to EN15746

All safety system information integrated in the main display

DIMENSIONS

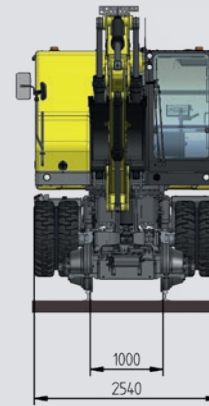
Rail travel



with offset boom / stick length 2 m
Position category 9B as per EN 15746-1



Standard gauge



Meter gauge

Road travel

